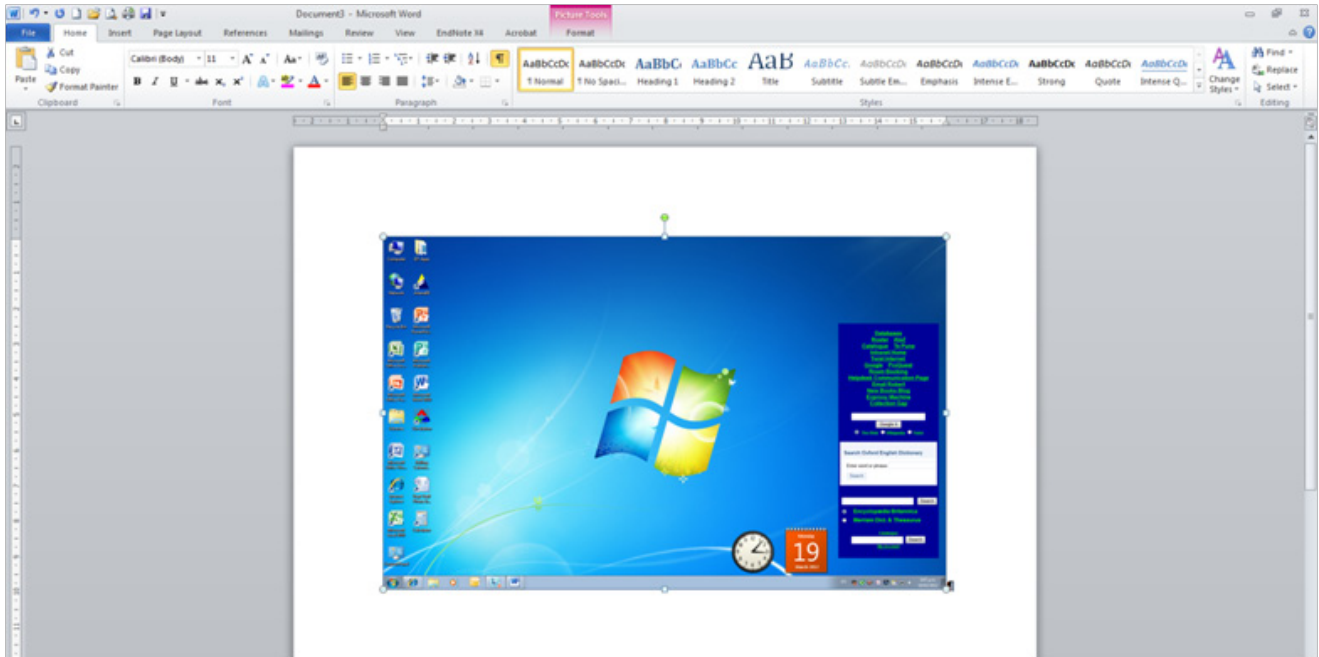


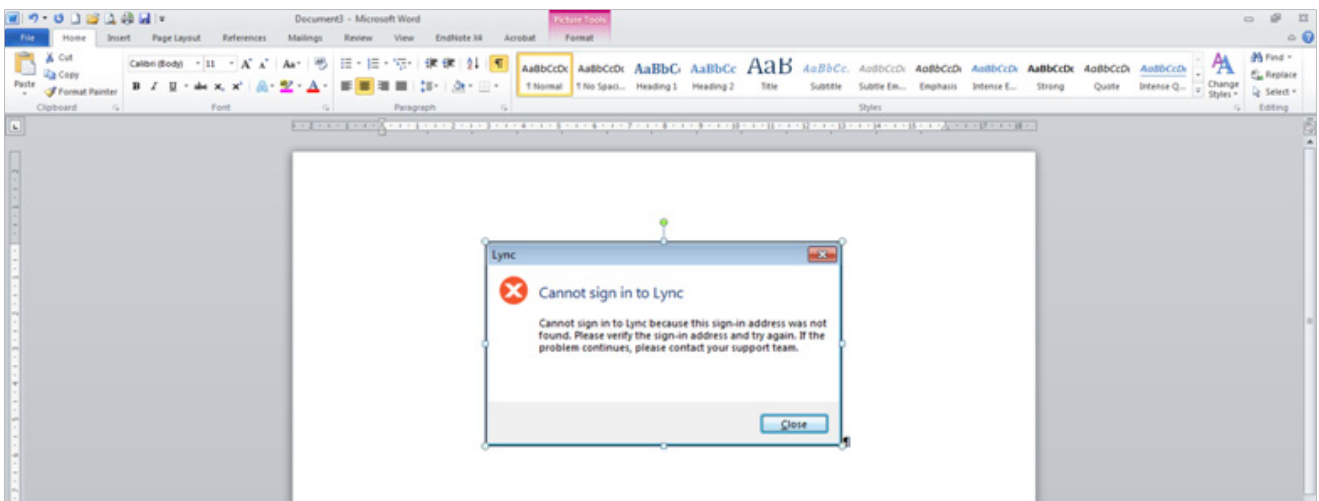
# Working with Images

## Capturing Screen Snapshots

1. To capture the entire screen click anywhere once
2. Press the Print Screen (PrtScn) key << Paste (Ctrl + V) into your document



1. To capture a window (not the entire screen), e.g. an error message or dialogue box
2. Press both the Alt and PrtScn keys << Paste (Ctrl + V) into your document



NB: The PrtScn key can be in different places depending on the type of keyboard, usually it is located above the Insert key.